



AHU™

AIR HANDLER

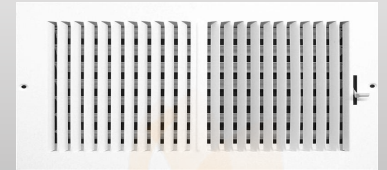
AHU 800

AHU 1200

AHU 1200 LV

AHU1600

AHU 2000 LV



IBC®

Quiet **EFFICIENT** Technology

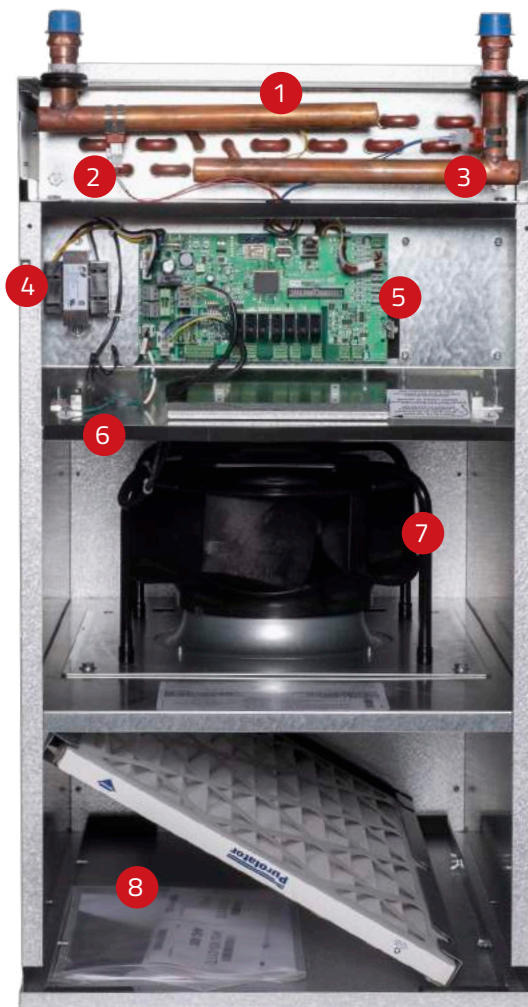


With our unique industry leading design and extremely quiet fan operation, the AHU will change the way you think about air handlers. Air distribution completely covers the heating coil for better heat transfer and energy efficiency. Say goodbye to the large, loud, and inefficient air handlers of the past and say hello to the IBC AHU.

INNOVATION

Interior

- 1 Hot Water Coil
- 2 Supply Water Temperature Sensor
- 3 Return Water Temperature Sensor
- 4 Transformer
- 5 Control Board
- 6 Temperature Sensor
- 7 Fan and Motor Assembly
- 8 Air Filter Compartment



Easy Installation

The AHU air handling appliance is designed for ducted heating and cooling. The appliance provides up to four mounting options for flexibility and ease of installation. Return air duct connections can be connected left, right, and bottom to suit the appliance's mounting position.



Quiet, Energy Efficient Heating

The AHU Air Handler pairs perfectly with any hot water heat source to allow for warm air heating throughout the building. With six position mounting and return air openings on the left, right, and bottom of the unit, the AHU has the flexibility to accommodate a wide range of application requirements.

HIGH EFFICIENCY

- High efficiency motor with variable speed (ECM) centrifugal fan
- High efficiency fin tube coil

EASY TO INSTALL & SERVICE

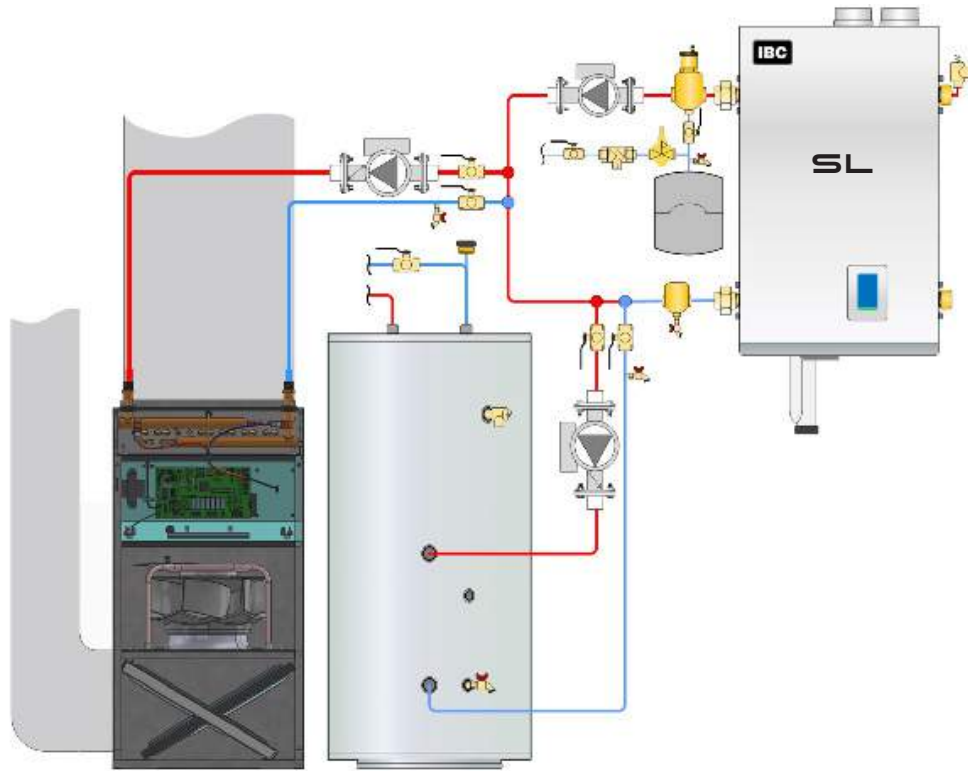
- Slide out fan assembly
- Optional filter rack positioning
- Multi-position configurations
- Industry standard duct sizes – supply air opening compatible with cased and uncased A/C and heat pump coils
- Compact design for those awkward spaces; the ability to orient horizontally or vertically
- Flexible electrical connection knock-outs on left and right sides

BUILT-IN FEATURES

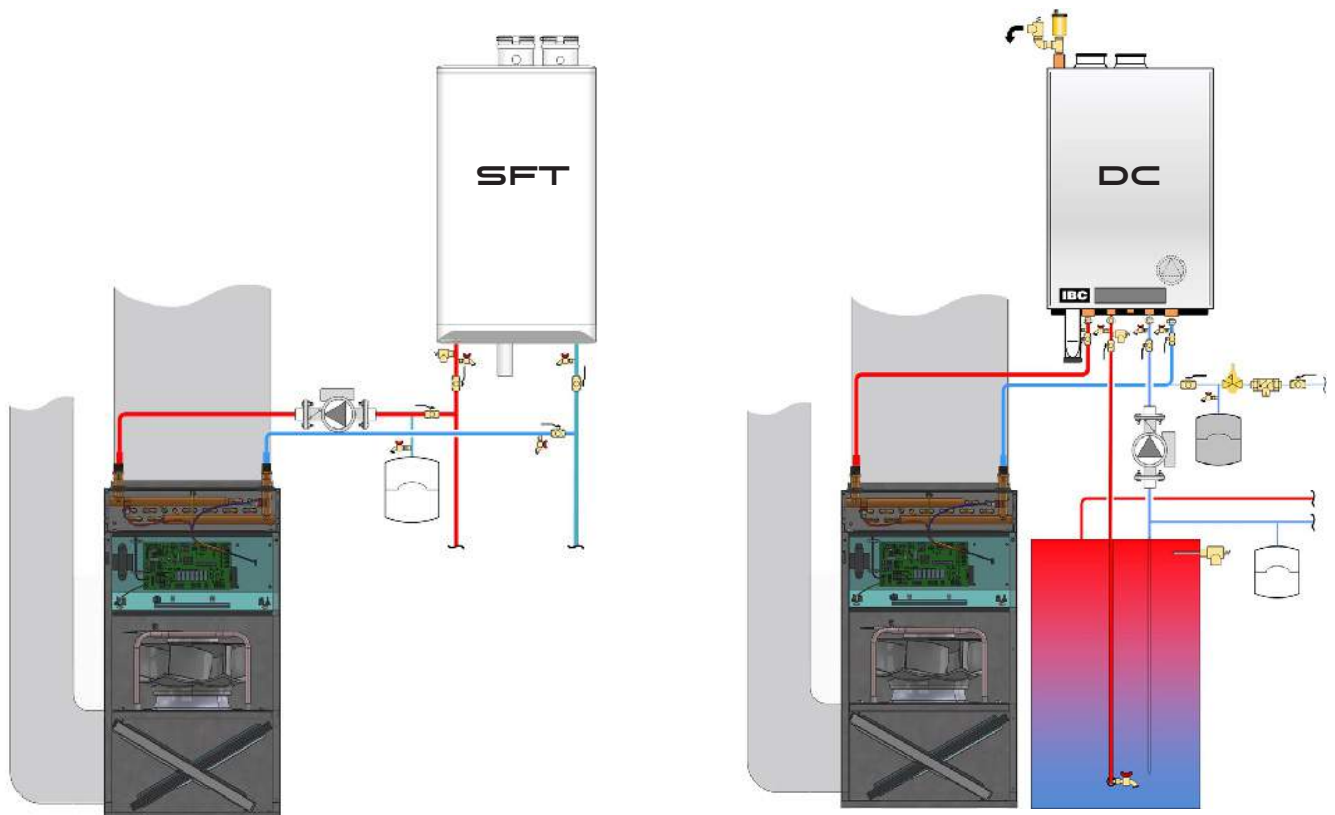
- Quiet operation
- Single stage or 2-stage heating and cooling
- Control for external pump (5A - 120V)
- Standard thermostat capable
- WiFi connection for programming with the IBCconnect mobile app
- Included - sensors for supply air, return air, supply water, return water, humidifier, dehumidifier, and frost protection
- Integrated air handling appliance
- Heat pump capable
- Maximum return air temperature 122°F (50°C)
- Lead-free coil for pairing with a tankless water heater

AHU - AIR HANDLER

Application Drawings



SL Series boiler serving AHU for heating and indirect tank for DHW



Superflow SFT Tankless boiler serving AHU for heating and on-demand DHW

DC combi unit serving AHU for heating and storage tank for DHW



At IBC we integrate **SUSTAINABLE THINKING** into everything we do. With a dedication to doing our part to protect the environment, we make it easy for customers to live more comfortably while also living more responsibly.



We are focused on innovating with intent, engineering solutions with lifetime sustainability in mind - from material selection, to smart features, to responsible recycling. Our products are designed to meet customer needs - lessening their environmental impact by giving them greater control over their energy and water consumption.

We are transforming the industry by introducing ground-breaking heat and hot water solutions to homes and businesses across North America.



AHU - AIR HANDLER

Technical Information



SPECIFICATIONS	AHU 800	AHU 1200 Low Velocity	AHU 1200	AHU 1600	AHU 2000 Low Velocity
Max. Water Temperature (*F/*C)	195/90	195/90	195/90	195/90	195/90
Coil Performance at 180°F (BTU/Hr)	66,800	80,600	80,600	99,300	110,300
Water Pipe Connections (inches)	3/4 MPT	3/4 MPT	3/4 MPT	3/4 MPT	3/4 MPT
External Static Pressure (WC) low/med/high	0.5/1.0/1.5	0.5	0.5/1.0/1.5	0.5/1.0/1.5	0.5
Maximum Operating Water Pressure (PSI)	150	150	150	150	150
Width (inches)	17.5	21	21	24.6	24.6
Depth (inches)	26	26	26	26	26
Height (inches)	32	38	38	42	42
Supply Air Opening Width (inches)	16	19.6	19.6	23	23
Supply Air Opening Depth (inches)	19.6	19.6	19.6	19.6	19.6
Side Return Air Opening Height (inches)	7	10.5	10.5	13	13
Side Return Air Opening Depth (inches)	23	23	23	23	23
Bottom Return Air Opening Width (inches)	13	10.5	10.5	14	14
Bottom Return Air Opening Depth (inches)	23	23	23	23	23
Max. Internal Current Power Rating 120 Volts	2.4 Amp	2.8 Amp	3.2 Amp	3.3 Amp	3.3 Amp
External Pump Supply 120 Volts	4 Amp	4 Amp	4 Amp	4 Amp	4 Amp
Voltage (V)	120 V	120 V	120 V	120 V	120 V
Max. Air Flow @ 0.5" Rated Static Pressure	1,134 CFM	1,131 CFM	1,707 CFM	2,219 CFM	2,219 CFM
Max. Return Air Temperature (*F/*C)	122/50	122/50	122/50	122/50	122/50
Filter Size (inches) - Not Supplied	16 x 25 x 1	25 x 20 x 1	25 x 20 x 1	25 x 20 x 1	25 x 20 x 1
Weight (Boxed)	98 lb	111 lb	111 lb	130 lb	130 lb

HEATING CAPACITY (Entering Dry Bulb Temp 70°F)

Entering Water Temperature	3 GPM				4 GPM				5 GPM			
	AHU 800	AHU 1200	AHU 1600	AHU 2000	AHU 800	AHU 1200	AHU 1600	AHU 2000	AHU 800	AHU 1200	AHU 1600	AHU 2000
195°F (90°C)	68.6 MBH	81.3 MBH	96.9 MBH	105.2 MBH	73.2 MBH	87.7 MBH	106.7 MBH	117.4 MBH	76.2 MBH	91.8 MBH	113.2 MBH	125.8 MBH
190°F (88°C)	65.7 MBH	78.0 MBH	92.9 MBH	100.8 MBH	70.2 MBH	85.1 MBH	102.3 MBH	112.5 MBH	73.0 MBH	88.1 MBH	108.6 MBH	120.6 MBH
180°F (82°C)	60.0 MBH	71.3 MBH	84.9 MBH	92.1 MBH	64.1 MBH	76.9 MBH	93.5 MBH	102.9 MBH	66.8 MBH	80.6 MBH	99.3 MBH	110.3 MBH
170°F (82°C)	54.4 MBH	64.6 MBH	77.0 MBH	83.5 MBH	58.1 MBH	69.8 MBH	84.8 MBH	93.2 MBH	60.5 MBH	73.1 MBH	90.0 MBH	100.0 MBH
160°F (71°C)	48.7 MBH	58.0 MBH	69.1 MBH	74.9 MBH	52.1 MBH	62.6 MBH	76.1 MBH	83.6 MBH	54.3 MBH	65.6 MBH	80.8 MBH	89.7 MBH
150°F (66°C)	43.1 MBH	51.4 MBH	61.2 MBH	66.3 MBH	46.2 MBH	55.5 MBH	67.4 MBH	74.1 MBH	48.1 MBH	58.2 MBH	71.6 MBH	79.5 MBH
140°F (60°C)	37.6 MBH	44.8 MBH	53.3 MBH	57.8 MBH	40.2 MBH	48.4 MBH	58.8 MBH	64.6 MBH	41.9 MBH	50.8 MBH	62.5 MBH	69.3 MBH
130°F (54°C)	32.0 MBH	38.3 MBH	45.5 MBH	49.3 MBH	34.3 MBH	41.4 MBH	50.2 MBH	55.1 MBH	35.8 MBH	43.4 MBH	53.4 MBH	59.1 MBH
120°F (49°C)	26.5 MBH	31.8 MBH	37.7 MBH	40.9 MBH	28.5 MBH	34.3 MBH	41.6 MBH	45.7 MBH	29.7 MBH	36.0 MBH	44.3 MBH	49.1 MBH
110°F (43°C)	21.2 MBH	25.3 MBH	30.0 MBH	32.5 MBH	21.2 MBH	27.4 MBH	33.2 MBH	36.4 MBH	23.7 MBH	28.7 MBH	35.3 MBH	39.1 MBH



www.ibcboiler.com

Toll Free: 1-844-HEAT IBC / 1-844-432-8422

All information contained in this brochure is subject to change without notice. Due to clerical error, regulation change or product development please confirm all information with IBC.

900-182 (R2)